

4

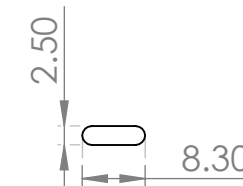
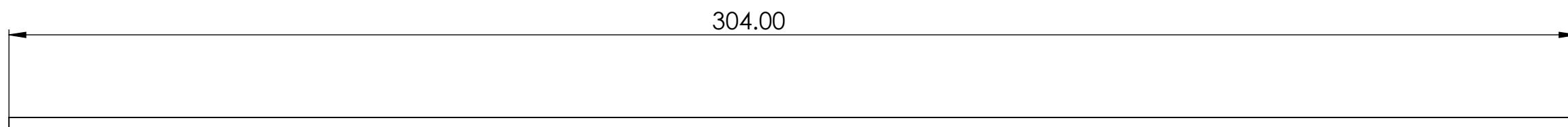
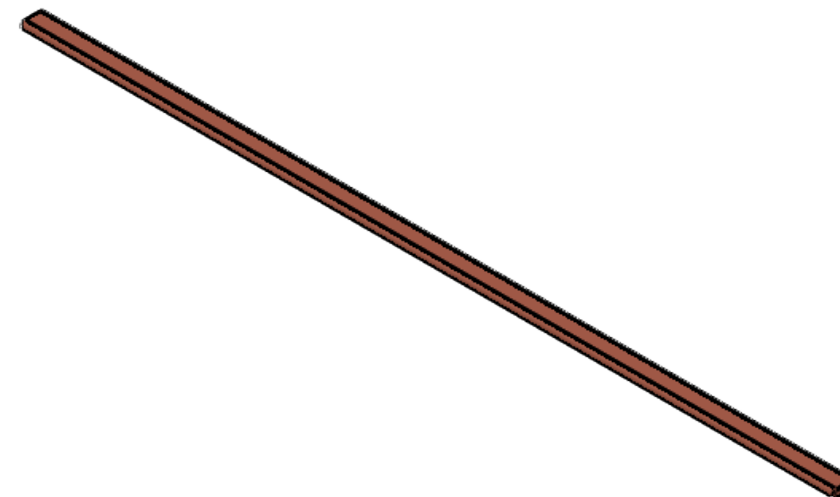
3

2

1

NOTE: UNLESS OTHERWISE SPECIFIED

- 1. MATERIAL: COPPER
- 2. Wick Structure: Sintered
- 3. Working Fluid: Water




B

B

A

A

UNLESS OTHERWISE SPECIFIED: DIMENSIONS ARE IN INCHES TOLERANCES: ANGULAR: $\pm 1^\circ$ BEND $\pm$  .X $\pm$ .1 .XX $\pm$ .01 .XXX $\pm$ .005	DRAWN	NAME	DATE	 <b>LIVERMORE CALIFORNIA</b>	
	CHECKED				
	ENG APPR.				
INTERPRET GEOMETRIC TOLERANCING PER ASME Y14.5- 2009	<b>PROPRIETARY AND CONFIDENTIAL</b> THE INFORMATION CONTAINED IN THIS DRAWING IS THE SOLE PROPERTY OF COOLING SOURCE. ANY REPRODUCTION IN PART OR AS A WHOLE WITHOUT THE WRITTEN PERMISSION OF COOLING SOURCE IS PROHIBITED.			<b>6X304mm Flat Heat Pipe</b>	
DO NOT SCALE DRAWING	SIZE <b>B</b>	CS400-6304-F-OA	REV	SCALE: 1:2	SHEET 1 OF 1

4

3

2

1